

11TH ANNUAL
CHARITY HORSE SHOW
AT WALNUT TRACE FARM - NASHVILLE, TN
MARCH 28-29, 2026

Presenting Sponsor:



Thank you for being a part of our 11th Annual Charity Horse Show!

We're so glad you're joining us for our 11th year of this springtime tradition. Whether you're here for your first show, schooling a green horse, knocking some mud off from the winter before show season, or have trained specifically for today, we hope you have a great time enjoying your horse and spending time with friends!

Any time we can spend with great horses and great people is certainly time well spent, and it's because of your participation in today's show that we're able to offer that to so many children, young adults, and families right here in Middle Tennessee. Every dollar of your entries, because of our incredible sponsors, is going directly to provide mentorship for those who have been through trauma and need to experience just how much God can heal hearts through our beloved equine friends.

Thank you, sincerely, for your support.

Carissa Ramsdell
Founder and Executive Director

Emergency Number: 615-736-3783 - call or text

SPECIAL THANK YOU TO GRACE JOHNSON AND THE ENTIRE WALNUT TRACE FARM CREW FOR OPENING YOUR BEAUTIFUL FACILITY TO EVERYONE, AGAIN, THIS YEAR! WE ARE SO THANKFUL FOR YOUR HOSPITALITY!



SMART EQUINE



Thank you, VOLUNTEERS and SPONSORS!

WWW.FREEDOMREIGNSRANCH.COM



11TH ANNUAL
CHARITY HORSE SHOW
AT WALNUT TRACE FARM - NASHVILLE, TN
MARCH 28-29, 2026

Presenting Sponsor:



8388 COLLINS ROAD, NASHVILLE

THERE IS ONLY ONE ENTRANCE OFF OF HWY 100. DO NOT USE POPLAR CREEK ROAD ENTRANCE!

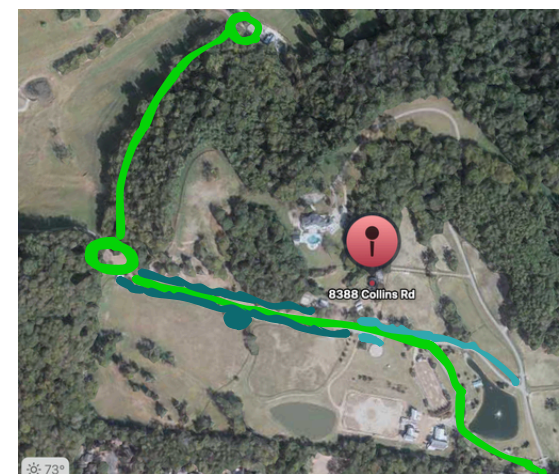
SATURDAY
GROUNDS OPEN AT 8AM
SHOW STARTS AT 9AM



SUNDAY
GROUNDS OPEN AT 9AM
SHOW STARTS AT 10AM



Please be kind to our volunteers helping you with parking. Please be courteous when parking and clean up after your horses when you leave.



THERE ARE TWO TURN AROUNDS, SEE SATELITE VIEW:
Cars will be required to park separate from those hauling horse trailers to ensure we have ample parking for everyone.

Thank you, **VOLUNTEERS**
and **SPONSORS!**



WWW.FREEDOMREIGNSRANCH.COM



11TH ANNUAL
CHARITY HORSE SHOW
AT WALNUT TRACE FARM - NASHVILLE, TN
MARCH 28-29, 2026

Presenting Sponsor:



MAIN WARM UP WILL ONLY BE OPEN FOR THE CURRENT SHOWING DIVISION. USE DRESSAGE ARENA (WITH JUMPS) AND ROUND PEN FOR SCHOOLING PRIOR TO YOUR DIVISION.
NO EXCEPTIONS, PLEASE.

SATURDAY
GROUNDS OPEN AT 8AM
SHOW STARTS AT 9AM

SUNDAY
GROUNDS OPEN AT 9AM
SHOW STARTS AT 10AM

Stick Horse Relay - Teams of 4 complete a stick horse course. The stick horse is the baton that must be passed and must remain between the rider's legs during their leg of the course. Each "rider" must ride at least part of the course but it is up to the team to determine how much each "rider" completes or how often riders are switched out. The team that completes the course the fastest, without faults wins. BONUS: teams in coordinating costumes get to subtract 3 seconds from their actual time. Staging is allowed.

Prize: Dover Giftcards and bragging rights!

Gambler's Choice (Sunday) - Jump any jump, in any direction, any number of times. Each successful jump is one point. If a jump is knocked down that jump may no longer be used and that point is lost.

COSTUME CONTESTS:

- Best Costume voted post-show by social media (overall)
- Most glitter on a single horse/rider combo (each day)
- Most mismatched horse/rider (each day)
- Most matched horse/rider (each day)
- Best turnout (each day)



SMART EQUINE



**Thank you, VOLUNTEERS
and SPONSORS!**

WWW.FREEDOMREIGNSRANCH.COM



11TH ANNUAL
CHARITY HORSE SHOW
AT WALNUT TRACE FARM - NASHVILLE, TN
MARCH 28-29, 2026

Presenting Sponsor:



PLANNING YOUR DAY:

All adds/scratches ****MUST**** be done at show office prior to the start of the division. Once a class is added, you will be given a post-it note that must accompany you to the show ring to give to the announcer/judges stand to confirm your add. No adds will be permitted without a post-it note confirming your add from the office. No exceptions!

We have asked everyone to enter all classes they plan on riding in prior to the time this schedule was posted. However, due to adds/scratches this class count can change quickly. **We will frequently update our SOCIAL MEDIA STORY on Instagram with the progression of the show.** Follow along for progression of the show with noted times to help plan your day. A good rule of thumb to gauge time is 2 minutes per over fences trip and 6 minutes per flat class. We will split flat classes for safety where entries warrant and therefore flat classes with 10 entries or more will take an additional 4-6 minutes. 5 minutes per division added for fence height adjustments where applicable.



WE WOULD LIKE TO EXTEND A SINCERE THANK YOU TO THE MEN OF ST. PAUL'S EPISCOPAL CHURCH IN FRANKLIN FOR PROVIDING EVERYONE WITH LUNCH THIS WEEKEND! WE ARE SO GRATEFUL FOR THEIR PARTNERSHIP AND GENEROSITY TO SERVE YOU TODAY AND SO MANY OF OUR RANCH PARTICIPANTS THROUGHOUT THE YEAR.

MEETING A BIG NEED!

Your participation in today's show helps us launch the fundraising need for our Summer and Fall Session Seasons. **All services we provide at Freedom Reigns Ranch are provided at no cost to the families we serve**, we are the only equine-assisted program in the state that does so. However, it does come at a significant cost. The remaining need for 2026, which will fund our Summer and Fall Session seasons allowing us to serve nearly 300 participants this year is \$300,000. Thank you for helping us meet a vital need by showing today! If you'd like to make an additional tax-deductible donation to support the Ranch, visit our website below.



SMART EQUINE



Thank you, **VOLUNTEERS**
and **SPONSORS!**

WWW.FREEDOMREIGNSRANCH.COM



11TH ANNUAL CHARITY HORSE SHOW

AT WALNUT TRACE FARM - NASHVILLE, TN
MARCH 28-29, 2026

Presenting Sponsor:



CIRCUMSTANCES OF INDIVIDUALS SERVED IN EACH PROGRAM TYPE:

- Children in foster care and recently adopted.
- Struggling with mental health: suicidal ideation, self-injury, depression and anxiety.
- Survivor of a violent crime or mass shooting, Veterans and first responders.
- Sexual Assault, Sexual Abuse, Child Exploitation Trafficking, and Rape survivors.
- Physical abuse and Domestic Violence Survivors.
- Dealing with grief and loss, divorce, death of a friend, sibling, or parent.
- Social and emotional challenges associated with being neurodivergent.
- Bullying, social anxiety, relational challenges, overall growth and confidence, sibling of a trauma survivor.
- Dealing with a terminal diagnosis or life-threatening illness.



When surveyed, 100% of program participants said that there was a positive change in at least one aspect of their life as a direct result of the Session Programs at Freedom Reigns Ranch.



"The ranch has made a huge impact in my life and I would not be the person I am today without the help of the ranch!"

-Teenage Participant, 2025



Accessing equine-assisted services is cost-prohibitive for a large majority of the families and organizations we serve. For many, simply affording the gas to drive to the Ranch and time away from work is already a strain to consider. Some groups we serve were denied services at other facilities due to their inability to pay.



ONE-ON-ONE

One-on-one Sessions are 90 minutes with one horse-one participant- one leader 100% of the time. They last for a full season.

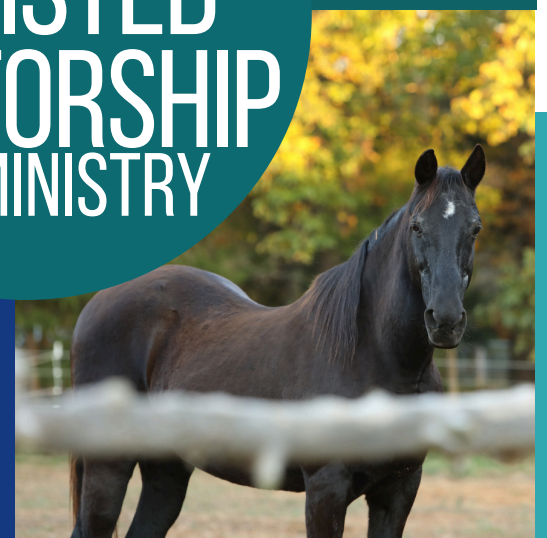
SMALL GROUP

Ranchers Groups are for girls ages 9-17. Groups are determined by age and life-circumstance and meet 1-2x/month

EQUINE ASSISTED MENTORSHIP AND MINISTRY

Family Sessions are designed to be a "bright spot" in the midst of a challenging season for families in crisis and those working in military, front-line care, and law enforcement professions.

FAMILY SESSIONS



To sponsor a session, visit our website or email: theranch@freedomreignsranch.com

11TH ANNUAL

CHARITY HORSE SHOW

AT WALNUT TRACE FARM - NASHVILLE, TN

MARCH 28-29, 2026

Presenting Sponsor:



Listerhill
CREDIT UNION

CLASS COUNTS AS OF 9:00AM MARCH 27TH

Saturday	Class Number	Name	Count
	200	Warm Up Trip (Course 1 or Course 2- no pl	22
Walk Only Trainer-assisted			
Division A	1	Hunter Equitation O/F - ground poles	5
	2	Hunter Equitation on the flat	5
Division B	3	Hunter Equitation O/F - ground poles	6
	4	Hunter Equitation on the flat	6
Walk-Trot			
Division A	5	Ground Poles Equitation O/F	4
	6	W/T Equitation on the flat	4
Division B	7	Ground Poles Equitation O/F	2
	8	W/T Equitation on the flat	2
Crossrails			
Division A	9	Cross Rails Equitation O/F	5
	10	Equitation on the flat (W/T)	4
Division B	11	Crossrails Equitation O/F	8
	12	Equitation on the flat (W/T)	8
Crossrails WTC			
Division A	13A	Equitation O/F	12
	14A	WT flat (no canter on flat!)	10
Division B	13B	Equitation O/F	5
	14B	WT flat (no canter on flat!)	5
Leadline			
	100		2
Stick Horse Relay			
	101		9
	15	12-15" Equitation O/F Course 1	20
	16	12-15" Equitation O/F Course 2	18
	17	Equitation WTC flat	19
	18	18' Equitation O/F Course 1	23
	19	18' Equitation O/F Course 2	22
	20	Equitation flat	22
	21	2' Equitation O/F Course 1	16
	22	2' Equitation O/F Course 2	16
	23	Equitation flat	15
	24	2'3 Equitation O/F course 1	9
	25	2'3 Equitation O/F course 2	8
	26	Equitation flat	6
	27	2'6 Equitation O/F course 1	2
	28	2'6 Equitation o/f course 2	2
	29	Equitation flat	0

TOTAL SATURDAY OVER FENCES TRIPS: 205
TOTAL SATURDAY FLAT CLASSES: 13

11TH ANNUAL

CHARITY HORSE SHOW

AT WALNUT TRACE FARM - NASHVILLE, TN

MARCH 28-29, 2026

Presenting Sponsor:



Listerhill
CREDIT UNION

ALL HEIGHTS RUN OPEN CARD PER DIVISION- MUST DECLARE COURSE AT INGATE

CLASS COUNTS AS OF 9:00AM MARCH 27TH

Sunday	Class	Name	
	200	Warm Up Trip (Course 1 or Course 2- no pl)	36
15" Jumpers	32	15" Course 1	13
	33	15" Course 2	17
	34	Chase Me Charlie	7
	35	TBD - class add for \$100	1
	36	Stick Horse Relay	0
	201	Leadline	2
2' Jumpers	37	2' Course 1	16
	38	2' Course 2	23
	39	2' Gamblers Choice (35s)	10
2'3" Jumpers	40	2'3" Course 1	19
	41	2'3" Course 2	23
	42	2'3" Gamblers Choice (35s)	10
2'3"-2'6" Jumpers	43	2'3"-2'6" Course 1	6
	44	2'3"-2'6" Course 2	7
	45	2'3"-2'6" Gamblers Choice (30s)	3
2'6" Jumpers	46	2'6" Course 1	8
	47	2'6" Course 2	7
	48	2'6" Gamblers Choice (30s)	3
2'6"-2'9" Jumpers	49	2'6"-2'9" Course 1	7
	50	2'6"-2'9" Course 2	6
	51	2'6"-2'9" Gamblers Choice (30s)	5

TOTAL SUNDAY OVER FENCES TRIPS: 219



Please help thank our 80+ volunteers with kindness and grace as you show this weekend. Our goal is to run things as efficiently and smoothly as possible and help you have a great, stress-free time!

11TH ANNUAL
CHARITY HORSE SHOW
AT WALNUT TRACE FARM - NASHVILLE, TN
MARCH 28-29, 2026

Thank you to our 2026 Title Sponsor



Listerhill
CREDIT UNION



WWW.FREEDOMREIGNSRANCH.COM